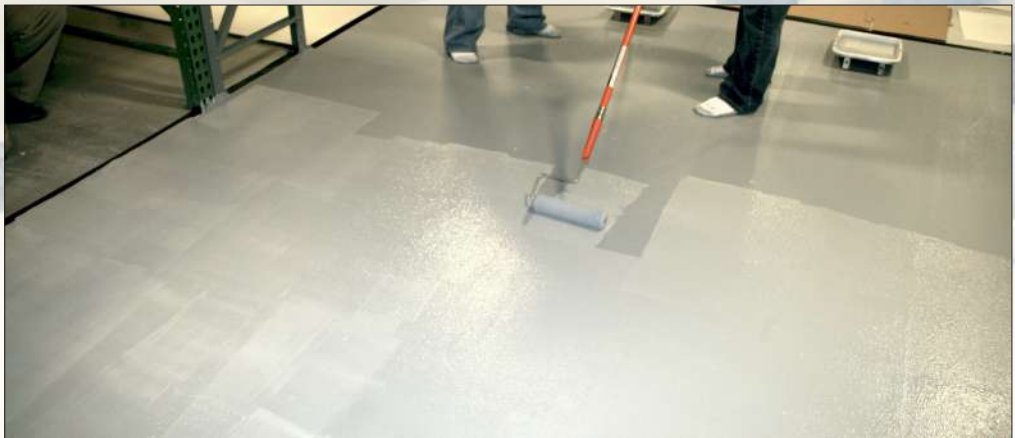


# ENECLAD® WBC

## Breathable, High Performance Polymer Composite Floor Protection System.

**ENECLAD® WBC** is a water-based, two component coating system that has been specifically designed to seal and protect concrete surfaces that may experience moisture problems. ENECLAD® WBC is a breathable coating system that resists blistering due to hydrostatic pressure issues through the concrete. It bonds to virtually any mineral / cement substrate as well as wood.

- No Odor
- Excellent Abrasion & Impact Resistance
- Outstanding Adhesion
- Safe & Simple to Use
- Ideal for protecting concrete floors when moisture is present



**ENECON**® Corporation  
The Fluid Flow  
Systems Specialists.

[www.enecon.com](http://www.enecon.com)

Toll Free: 888-4-ENECON

Tel: 516 349 0022 · Fax: 516 349 5522

[info@enecon.com](mailto:info@enecon.com)

6 Platinum Court · Medford, NY 11763-2251

## Technical Data

Theoretical coverage rate per kg. @ 10 - 12 mils 25 - 30 ft <sup>2</sup> / 2 - 2 1/2 m <sup>2</sup>			
Mixing ratio	Base	Activator	
-by volume	2	5	
-by weight	2	5	
Ambient Temperature	Working Life	Minimum Overcoating	Maximum Overcoating
41°F 5°C	120 min	16 hrs	48 hrs
59°F 15°C	75 min	12 hrs	36 hrs
77°F 25°C	60 min	8 hrs	24 hrs
86°F 30°C	50 min	5 hrs	16 hrs

## Working Life & Cure Times

Ambient Temperature	Foot Traffic	Fork Lift	Full Cure
59°F 15°C	48 hrs	7 days	14 days
68°F 20°C	36 hrs	6 days	10 days
77°F 25°C	24 hrs	4 days	7 days
86°F 30°C	18 hrs	3 days	5 days

## CHEMCLAD® P4C Technical Data

Theoretical coverage rate per kg. @ 3 mils. 70 - 80 ft <sup>2</sup> / 6 - 7 m <sup>2</sup>			
Mixing ratio	Base	Activator	
-by volume	2	5	
-by weight	2	5	
Ambient Temperature	Working Life	Minimum Overcoating	Maximum Overcoating
41°F 5°C	120 min	16 hrs	48 hrs
59°F 15°C	75 min	12 hrs	36 hrs
77°F 25°C	60 min	8 hrs	24 hrs
86°F 30°C	50 min	5 hrs	16 hrs

## Chemical Resistance

Gasoline . . . . .	EX	Detergent Solution . . . . .	EX
Kerosene . . . . .	EX	Trisodium Phosphate . . . . .	EX
50% Anti-Freeze . . . . .	EX	20% Calcium Chloride . . . . .	EX
Transmission Fluid . . . . .	EX	10% Hydrochloric Acid . . . . .	EX
Power Steering Fluid . . . . .	EX	10% Sulfuric Acid . . . . .	EX
Motor Oil . . . . .	EX	10% Sodium Hydroxide . . . . .	EX

EX - Suitable for most applications including immersion.  
G - Suitable for intermittent contact, splashes, etc.

## Using ENECLAD® WBC

**Surface Preparation** - ENECLAD® WBC should only be applied to clean, firm, dry, and well roughened surfaces.

1. Remove all loose material and surface contamination.
2. Depending on the surface, solvent clean and / or remove contamination by abrasive blasting, steam cleaning, pressure washing or other suitable means.
3. New concrete should be allowed to cure for a minimum of 28 days prior to treatment. Ensure that all laitance is removed from cementitious surfaces before applying ENECLAD® WBC.
4. After removing all surface and sub-surface contamination, flush the area as necessary and allow to dry completely.

**Priming Concrete Surfaces** - Prior to applying ENECLAD® WBC to concrete and / or cementitious substrates, the surface should be treated with CHEMCLAD® P4C to seal the surface, minimize out-gassing and ensure that optimum adhesion is obtained. After mixing, CHEMCLAD® P4C should be applied using a brush or roller at the rate of 70 - 80 square feet (6 - 7 square meters) per kilogram to achieve the recommended film thickness of 3 mils.

Note: coverage will be reduced on very rough and / or porous surfaces.

The application of the ENECLAD® WBC may commence when the applied CHEMCLAD® P4C reaches its minimum overcoating time and should be completed within its maximum overcoating time as listed in the chart on the left. For additional details concerning the use of the CHEMCLAD® P4C, please refer to the instructions supplied with the material.

**Mixing & Application** - ENECLAD® WBC is supplied in pre-measured quantities to simplify mixing of full units. Simply pour the contents of the Activator container into the Base container; then, using the supplied stirrer or a paint mixer in an electric drill, mix thoroughly until a uniform, streak-free color is achieved. Apply the mixed ENECLAD® WBC to the prepared (and / or primed) surface using a brush, squeegee or roller. As a guide, a coverage rate of 25 - 30 square feet (2 - 2 1/2 square meters) per kilogram should result in an applied thickness of approximately 10 - 12 mils on a relatively smooth surface. 2 coats of ENECLAD® WBC should be applied per project resulting in a final ENECLAD® WBC cured thickness of 10 - 12 mils. Optimum recoat time between coats is 16 - 24 hours.

Note: Shape, contour, porosity, roughness, etc. will affect the coverage obtainable.

**Health & Safety** - Every effort is made to ensure that ENECON® products are as simple and safe to use as possible. Normal industry standards and practices for housekeeping, cleanliness and personal protection should be observed. For further information and guidance, please refer to the detailed SAFETY DATA SHEETS (SDS) supplied with the material and also available on request.

**Cleaning of Equipment** - Wipe excess material from tools immediately. Use acetone, MEK, isopropyl alcohol or similar solvent as needed.

**Technical Support** - The ENECON® engineering team is always available to provide technical support and assistance. For guidance on difficult application procedures or for answers to simple questions, call your local ENECON® Fluid Flow Systems Specialist or the ENECON® Engineering Center.

All information contained herein is based on long term testing in our laboratories as well as practical field experience and is believed to be reliable and accurate. No condition or warranty is given covering the results from use of our products in any particular case, whether the purpose is disclosed or not, and we cannot accept liability if the desired results are not obtained.

Copyright © 2015 by ENECON® Corporation. All rights reserved. No part of this work may be reproduced or used in any form or by any means - graphic, electronic or mechanical including photocopying, recording, taping or information storage and retrieval systems - without written permission of ENECON® Corporation.

