

*Foot Traffic  
in as little as  
90 minutes*

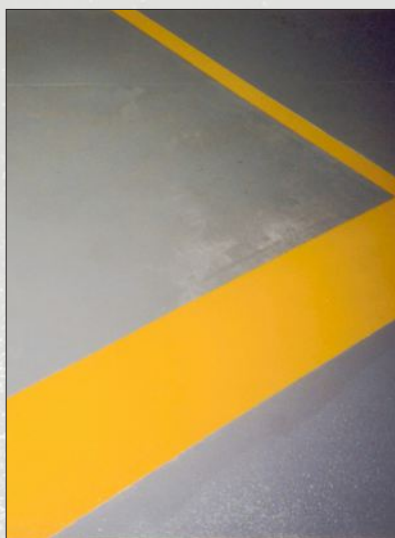
# ENECLAD® FSC

## Fast Setting, High Performance Polymer Composite Floor Protection System.

ENECLAD® FSC is a water-based, two component coating system that has been specifically designed to seal and protect concrete surfaces that need to return to service quickly. It bonds to virtually any mineral / cement substrate as well as wood.

ENECLAD® FSC is a fast setting coating which will minimize downtime. It bonds to virtually any mineral / cement substrate as well as wood.

- Excellent Abrasion & Impact Resistance
- Outstanding Adhesion
- Safe & Simple to Use
- Ideal for protecting concrete floors when moisture is present



*Available in  
Safety Yellow*



**ENECON® Corporation**  
The Fluid Flow  
Systems Specialists.

[www.enecon.com](http://www.enecon.com)

Toll Free: 888-4-ENECON

Tel: 516 349 0022 · Fax: 516 349 5522

[info@enecon.com](mailto:info@enecon.com)

6 Platinum Court · Medford, NY 11763-2251

## Technical Data

Theoretical coverage rate per kg. @ 10 - 12 mils 25 ft<sup>2</sup> / 2.5 m<sup>2</sup>

Mixing ratio	Base	Activator	
-by volume	4	3	
-by weight	1	1	
Ambient Temperature	Working Life	Minimum Overcoating	Maximum Overcoating
59°F 15°C	75 min	4 hrs	24 hrs
77°F 25°C	60 min	2 hrs	12 hrs
86°F 30°C	45 min	1 hrs	8 hrs

## Working Life & Cure Times

Ambient Temperature	Foot Traffic	Fork Lift	Full Cure
68°F 20°C	3 hrs	8 hrs	3 days
77°F 25°C	2 hrs	6 hrs	2 days
86°F 30°C	1.5 hrs	5 hrs	1 day

## Chemical Resistance

Gasoline . . . . .	EX	Detergent Solution . . . . .	EX
Kerosene . . . . .	EX	Trisodium Phosphate . . . . .	EX
50% Anti-Freeze . . . . .	EX	20% Calcium Chloride . . . . .	EX
Transmission Fluid . . . . .	EX	10% Hydrochloric Acid . . . . .	EX
Power Steering Fluid . . . . .	EX	10% Sulfuric Acid . . . . .	EX
Motor Oil . . . . .	EX	10% Sodium Hydroxide . . . . .	EX

EX - Suitable for most applications including immersion.  
G - Suitable for intermittent contact, splashes, etc.

## Using ENECLAD® FSC

**Surface Preparation** - ENECLAD® FSC should only be applied to clean, firm, dry, and well roughened surfaces.

1. Remove all loose material and surface contamination.
2. Depending on the surface, solvent clean and / or remove contamination by abrasive blasting, steam cleaning, pressure washing or other suitable means.
3. New concrete should be allowed to cure for a minimum of 28 days prior to treatment. Ensure that all laitance is removed from cementitious surfaces before applying ENECLAD® FSC.

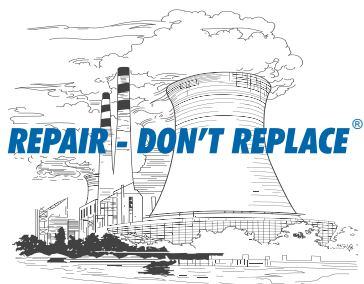
**Mixing & Application** - ENECLAD® FSC is supplied in pre-measured quantities to simplify mixing of full units. Simply pour the contents of the Activator container into the Base container; then, using the supplied stirrer or a paint mixer in an electric drill, mix thoroughly until a uniform, streak-free color is achieved. Apply the mixed ENECLAD® FSC to the prepared surface using a brush, squeegee or roller. As a guide, a coverage rate of 25 square feet (2.5 square meters) per kilogram should result in an applied thickness of approximately 10 - 12 mils on a relatively smooth surface.

Note: Shape, contour, porosity, roughness, etc. will affect the coverage obtainable.

**Health & Safety** - Every effort is made to ensure that ENECON® products are as simple and safe to use as possible. Normal industry standards and practices for housekeeping, cleanliness and personal protection should be observed. For further information and guidance, please refer to the detailed SAFETY DATA SHEETS (SDS) supplied with the material and also available on request.

**Cleaning of Equipment** - Wipe excess material from tools immediately. Use acetone, MEK, isopropyl alcohol or similar solvent as needed.

**Technical Support** - The ENECON® engineering team is always available to provide technical support and assistance. For guidance on difficult application procedures or for answers to simple questions, call your local ENECON® Fluid Flow Systems Specialist or the ENECON® Engineering Center.



All information contained herein is based on long term testing in our laboratories as well as practical field experience and is believed to be reliable and accurate. No condition or warranty is given covering the results from use of our products in any particular case, whether the purpose is disclosed or not, and we cannot accept liability if the desired results are not obtained.

Copyright © 2018 by ENECON® Corporation. All rights reserved. No part of this work may be reproduced or used in any form or by any means - graphic, electronic or mechanical including photocopying, recording, taping or information storage and retrieval systems - without written permission of ENECON® Corporation.